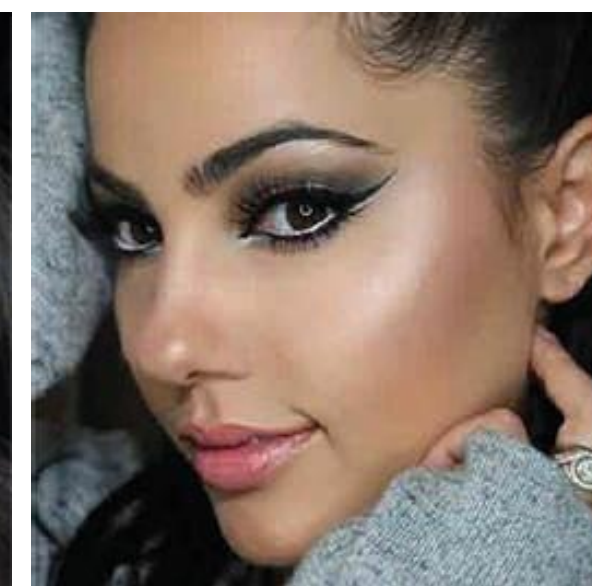


ASSEMBLÉE GÉNÉRALE

ALEXANDRA PALT

DIRECTRICE DEVELOPPEMENT DURABLE

20 AVRIL 2016



DÉVELOPPEMENT DURABLE



***SHARING
BEAUTY
WITH ALL***

An aerial photograph of a lush green wetland or marsh. A narrow, winding water channel flows through the dense vegetation, creating a meandering path. The water is a dark, reflective brown, contrasting with the vibrant green of the plants. The overall scene is a natural, undisturbed landscape.

ENJEUX

ENVIRONNEMENTAUX
& SOCIAUX



EFFICACITÉ ÉCONOMIQUE

INNOVATION



2015

ANNÉE
CHARNIÈRE

COP

21







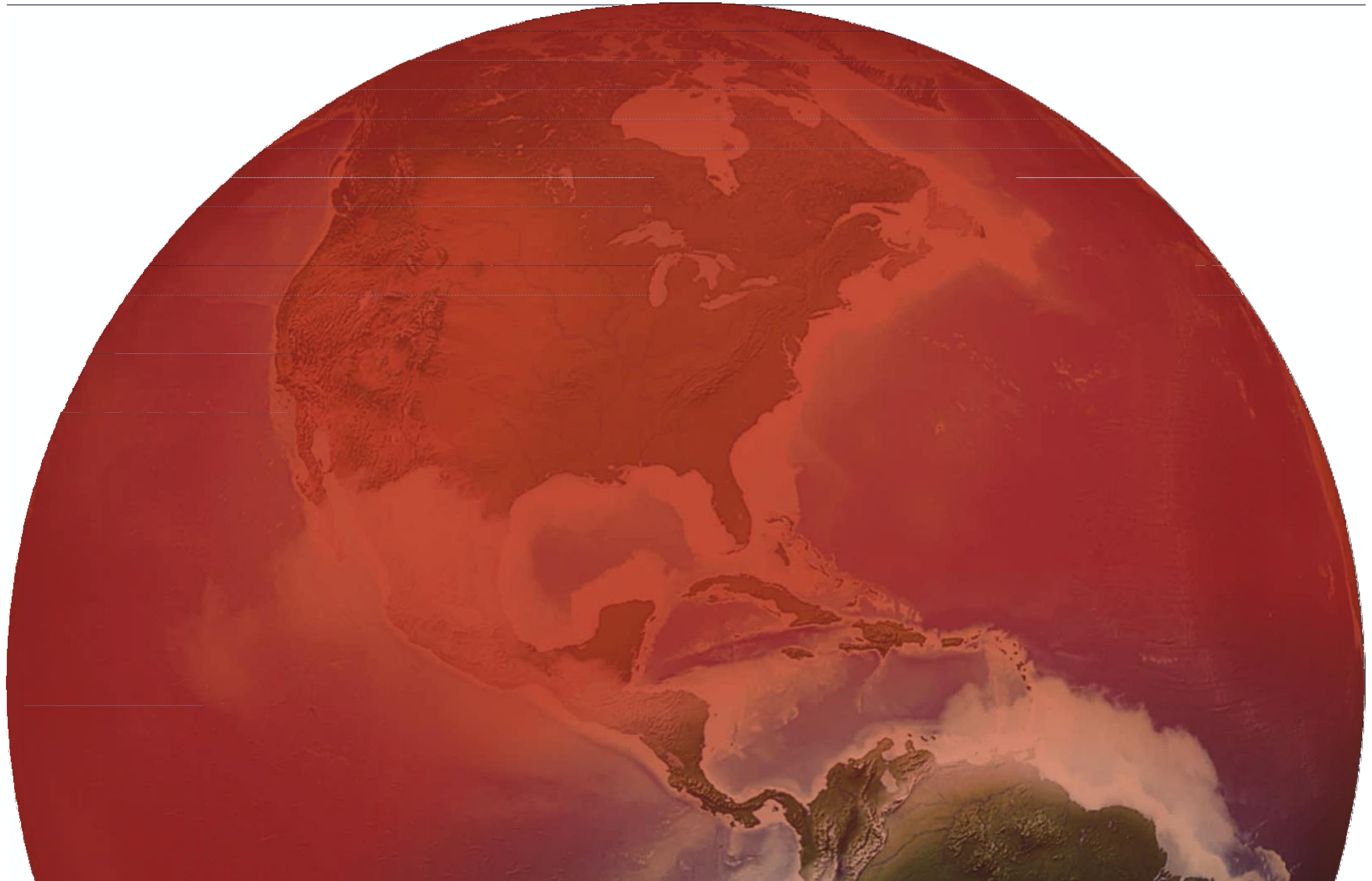








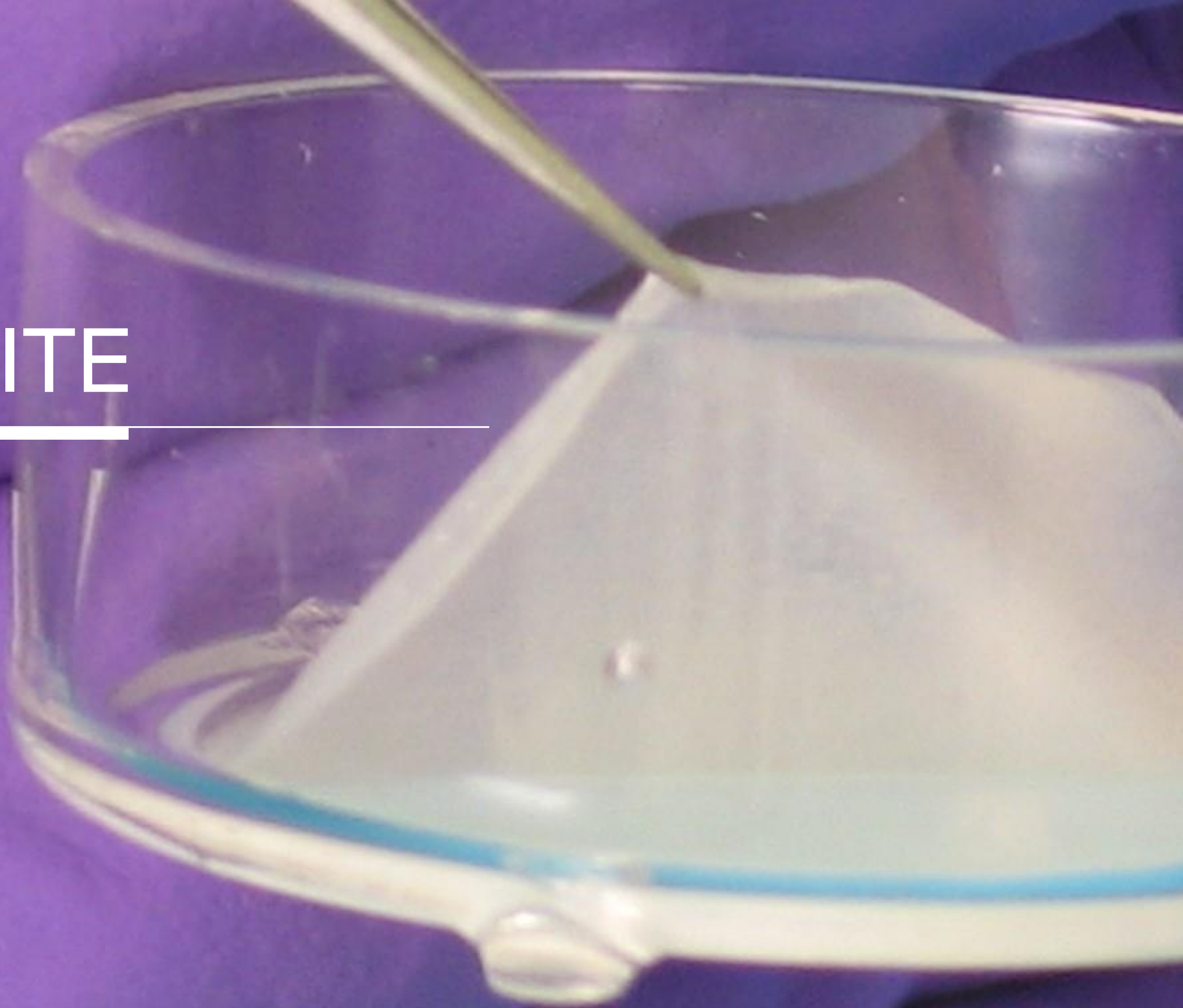






2015
UN TOURNANT
MAJEUR

1979
PEAU
RECONSTRUITE





1995

LABORATOIRE DE RECHERCHE

ENVIRONNEMENTALE

2002

AUDIT SOCIAUX



A photograph showing a woman with voluminous, dark, curly hair being styled by two other women. The woman being styled is in the foreground, looking slightly to the right. The two women styling her hair are behind her, one on the left and one on the right, both looking down at her hair. The woman on the left is wearing a black sleeveless top, and the woman on the right is wearing a white long-sleeved top. The background is a plain, light-colored wall.

2007

FONDATION
L'ORÉAL

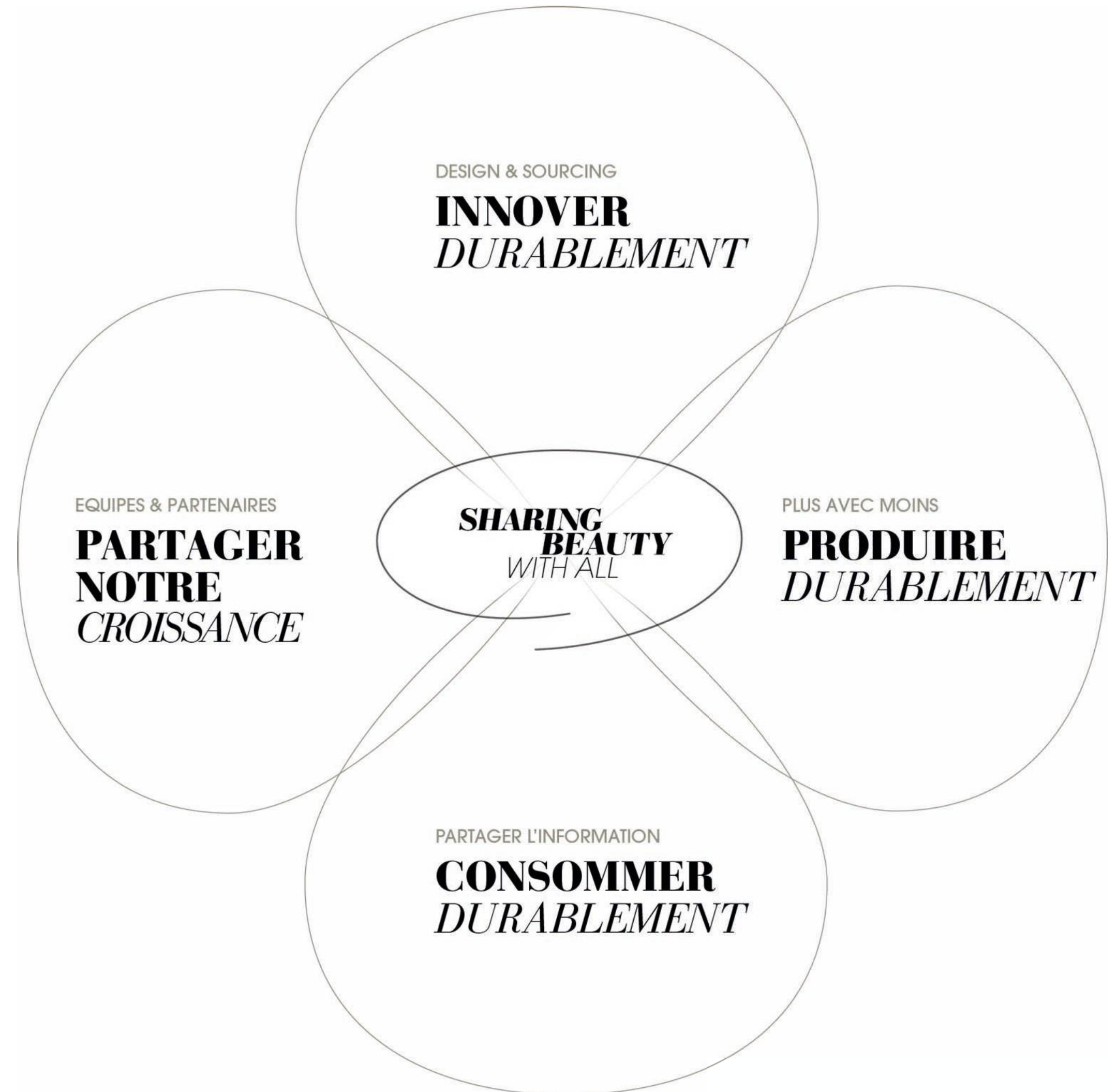




2013

DÉVELOPPEMENT DURABLE
PILIER STRATÉGIQUE

**SHARING
BEAUTY**
WITH ALL





OBJECTIF 2020

100%

DE NOS PRODUITS PRÉSENTENT
UN PROFIL ENVIRONNEMENTAL
OU SOCIAL AMÉLIORÉ



PERFORMANCE

RENTABILITÉ

CONTRIBUTION
AU DÉVELOPPEMENT
DURABLE



2015

74%

DÉJÀ
ATTEINT



NOUVEAU

GARNIER

Ultra
DOUX

SHAMPOOING DOUX APAISANT

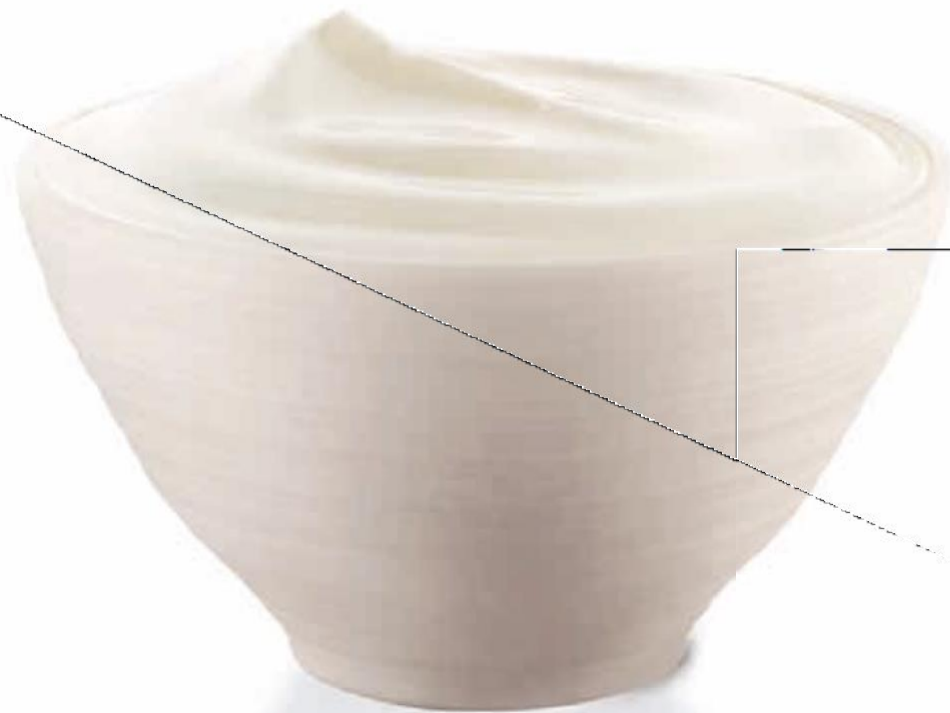
délicatesse
d'avoine

CRÈME DE RIZ
& LAIT
D'AVOINE

SANS PARABEN
Testé sur
cuir chevelu
SENSIBLE
EXTRAIT NATUREL

Apaise, hydrate et protège
Toucher souple et soyeux

CHEVEUX DÉLICATS



89%

BIODÉGRADABILITÉ



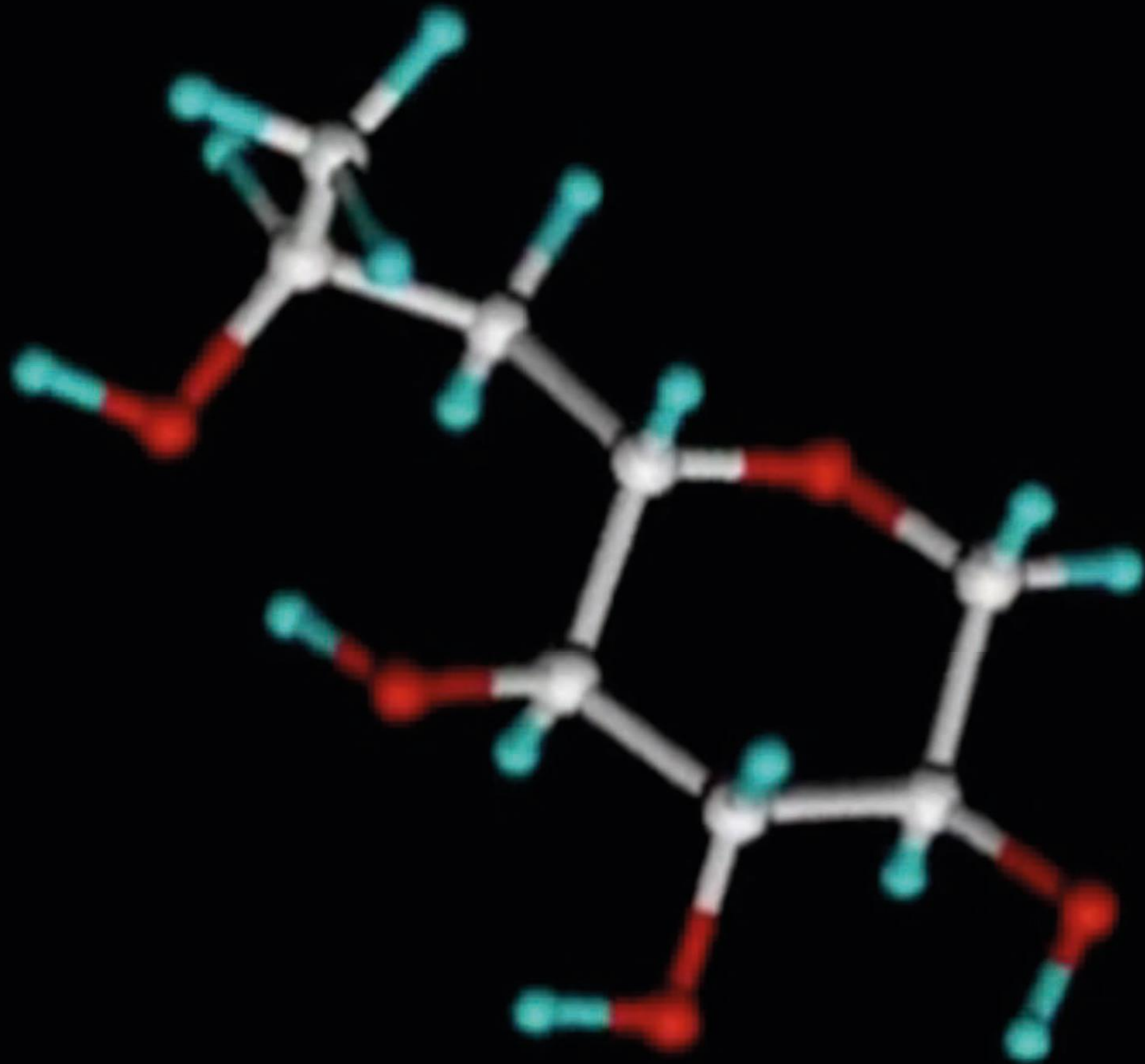
80%

D'INGRÉDIENT
D'ORIGINE
RENOUVELABLE

A male scientist with a beard and safety glasses, wearing a white lab coat, is focused on his work in a laboratory. He is pouring a clear liquid from a glass flask into a petri dish. The background is a blurred laboratory environment with blue lighting. The text 'FORMIDABLE' is overlaid on the left side of the image, underlined.

FORMIDABLE

SOURCE
D'INNOVATION



PRO-XYLANE



CHIMIE VERTE

A glass flask containing a white substance, surrounded by wood shavings. The flask is positioned in the lower-left quadrant of the image. The wood shavings are piled around the base of the flask, extending towards the right and slightly upwards. The background is a plain, light color.

INNOVATION

DURABLE

OBJECTIF 2020

-60% ÉMISSIONS DE CO₂





107229

BRUNNEN



WILFRED



ÉMISSIONS
DE CO₂
-56%

+26%
PRODUCTION



YICHANG
TIANMEI



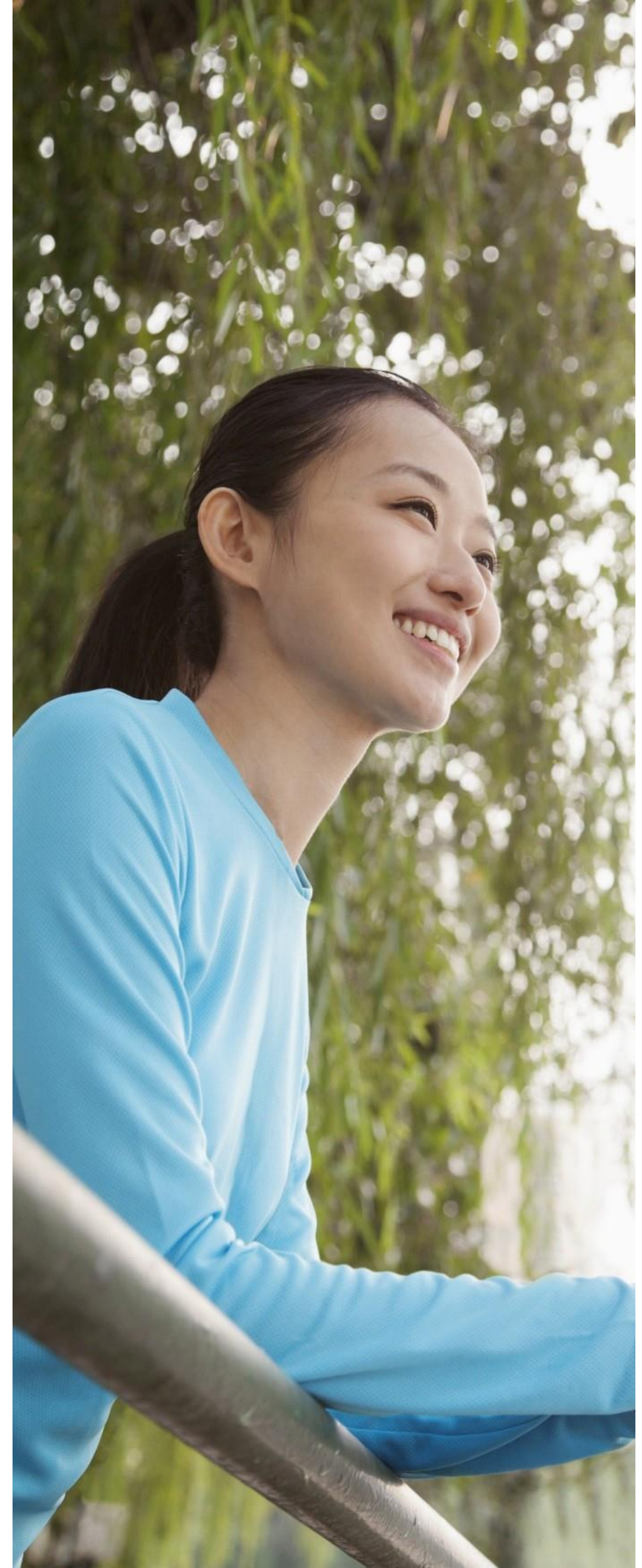
1^{ÈRE} USINE CHINOISE

100% ELECTRICITE VERTE



9 SITES

NEUTRES
EN CARBONE



ÉGALITÉ

PROFESSIONNELLE



COUVERTURE SANTÉ PRÉVOYANCE













APPROVISIONNEMENT --- RESPONSABLE











INNOVER
DURABLEMENT



PRODUIRE
DURABLEMENT



CONSOMMER
DURABLEMENT



PARTAGER
NOTRE
CROISSANCE



PRÉPARER LE FUTUR



SURPERFORMER À LONG TERME

